



SUSTAINABILITY *STRATEGY*

2024 to 2030 - Year 3



INTRODUCTION

At Liverpool Experience Campus, we understand how important it is to do our bit to minimise the environmental impact of our buildings and events tackle the climate crisis.

We want to be a leading voice in the industry encouraging sustainable practices, working with our clients to deliver the most sustainable events possible.

Environment, sustainability and climate action are key focuses of our Social Value Impact Plan. The Liverpool Experience Campus sustainability strategy outlines six fundamental aims to ensure sustainability is at the heart of what we do. We are committed to learning and evolving towards a more sustainable future, pledging to achieve net zero by 2030 with the support and collaboration of our staff, clients, contractors, and stakeholders.



OUR COMMITMENT

We commit to creating a sustainable and net zero event campus by 2030, ensuring that we continue to provide world class facilities without having a negative effect on our environment.

Our sustainability strategy aims to minimise our environmental impact, promote social responsibility and contribute to the well-being of the communities we serve.



CONTEXT

Developing and implementing a successful sustainability strategy involves considering a range of factors to address environmental, social and economic concerns. In devising this strategy, the goals and commitments here were taken into consideration to help shape our own plans.

- ✘ **17 UN SUSTAINABILITY DEVELOPMENT GOALS -** we have taken in to account the UN's SDG's, considering our social value, our contribution to Liverpool and it's specific context.
- ✘ **NET ZERO CARBON EVENTS PLEDGE -** we have committed to support the goal of net zero greenhouse gas (GHG) emissions by 2050, in line with global efforts set out by the Paris Agreement to limit warming to 1.5°C and reduce total global GHG emissions by 50% by 2030, and to actively promote and advocate for industry efforts throughout the value chain.
- ✘ **LIVERPOOL CITY 2030 NET ZERO GOAL –** the alignment of our strategy and goals to our shareholder, Liverpool City Council is especially important to us as we share the passion and ambition of making a meaningful and sustainable impact on our city and region.



OUR *JOURNEY* SO FAR



33% of retail catering menus on offer are plant-based across the arena.



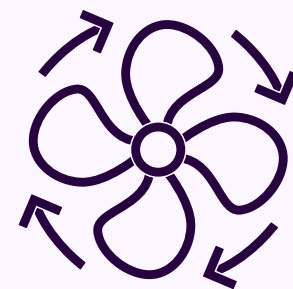
Achieved Greener Arena Highly Commended status.



Usage of 100% renewable electricity across our entire campus.



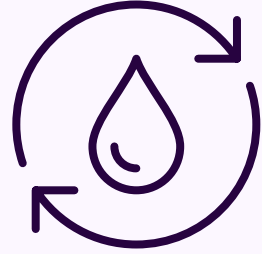
925 photovoltaic panels on Exhibition Centre's roof creating renewable energy.



Installed air sourced heat pumps in both the Convention Centre and M&S Bank Arena to replace our gas boilers.



Food waste processed on site via anaerobic digestion or donated to local charities across the city region.



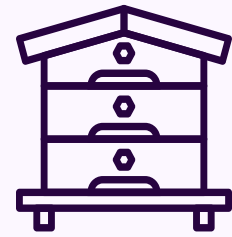
Rainwater harvesting across venues to support with reusable water usage, providing 40% of water for flushing across the arena and convention centre.



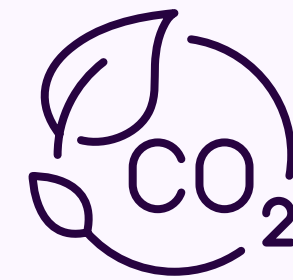
Achieved Gold status as a Green Meetings accredited venue.



Championed sustainable industry events, including Exhibition One and Two and Act 1.5.



Increased biodiversity and welcomed 3 beehives and a bug hotel.



Carbon labelling on food menus, empowering clients to make sustainable food choices.



Launched a sustainable procurement policy.



Achieved Platinum status as a Greengage ECOsmart accredited venue.



Installed LED lighting across the campus.

CARBON REDUCTION

We are proud to have taken a significant step on our journey to net zero by becoming a carbon neutral event campus.

2022
-
2023

Total carbon footprint of Liverpool Experience Campus August 2022 – July 2023 was 630.84 tCO₂e.

This measurement is the baseline that all our reduction targets are based on against Scope 1, 2 and 3.

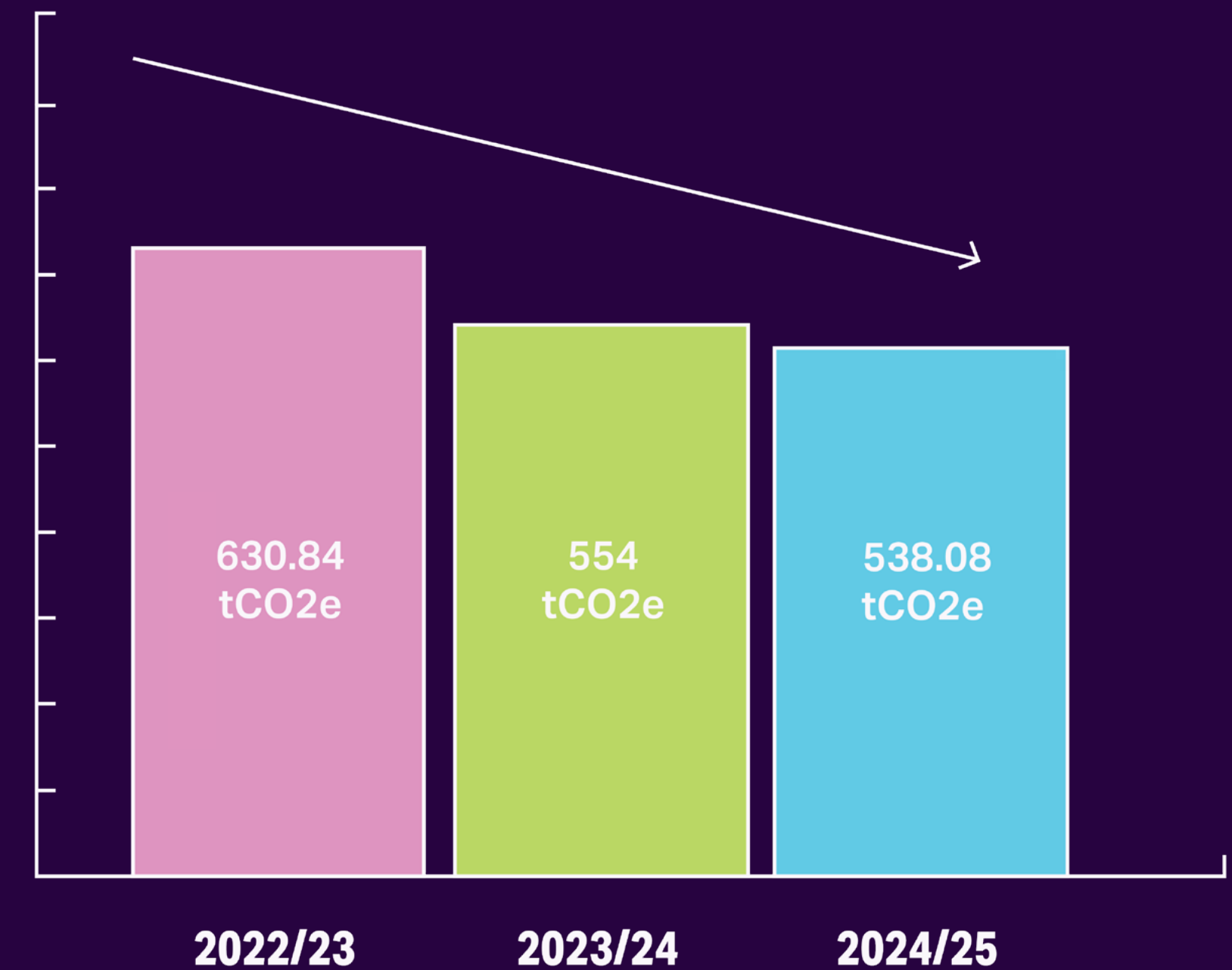
2023
-
2024

The total level of emissions produced in August 2023 - July 2024 was 554 tonnes Co₂e, a 12 per cent reduction against our baseline.

2024
-
2025

The total level of emissions produced in August 2024 - July 2025 was 538.08 tonnes Co₂e, a 14.7% reduction against our baseline.

EMISSIONS PRODUCED



OUR AIMS

1. Support the development of super low carbon events within our industry.
2. Manage all waste streams arising from our activities in a responsible manner and achieve zero waste to incineration.
3. Create a campus that runs on renewable energy only and operates in the most efficient way, reducing consumption.
4. Influence our suppliers and partners to ensure the environmental, social and economic impacts over the lifecycle of the products or services we procure support the goals outlined in this strategy.
5. Deliver a sustainable catering service centred around reducing carbon emissions, sourcing food ethically, minimising food waste and ensuring high welfare standards.
6. Promote sustainable travel alternatives and initiatives to staff, clients and all visitors to our campus.



HOW *WILL* WE DO IT?

There are six primary areas we will consider in our strategy, including events, waste, energy, procurement, catering and travel.



EVENTS



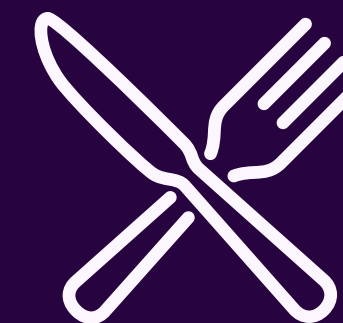
WASTE



ENERGY



PROCUREMENT



CATERING



TRAVEL

EVENTS

Through sustainable event management, we can advise our clients and help implement responsible decision making into the planning, organisation and participation in an event.

We will ensure that our staff, clients, suppliers and sub-contractors are aware of their social and environmental responsibilities, empowering them to get the most out of their events without compromising our aims.

WE WILL ACHIEVE THIS BY:

- ✘ Maintaining our green accreditations and continuing to explore new ones.
- ✘ Collaborating with our clients to develop materials that make it easy for them to make good decisions and consider sustainability in their event planning, including developing checklists and assets for clients.
- ✘ Organising an annual sustainability event for staff and stakeholders to drive meaningful behaviour change through education and knowledge-sharing.
- ✘ Create and share energy impact statements for all events to inform clients of their onsite carbon footprint and suggest a reduction plan.
- ✘ Working with city partners to develop and launch a 'Follow the Buzz' trail, encouraging visitors and the local community to explore the city region in a responsible and educational way.



The Company of Biologists' Sustainability Initiative

Are you looking to make your next scientific event more sustainable?

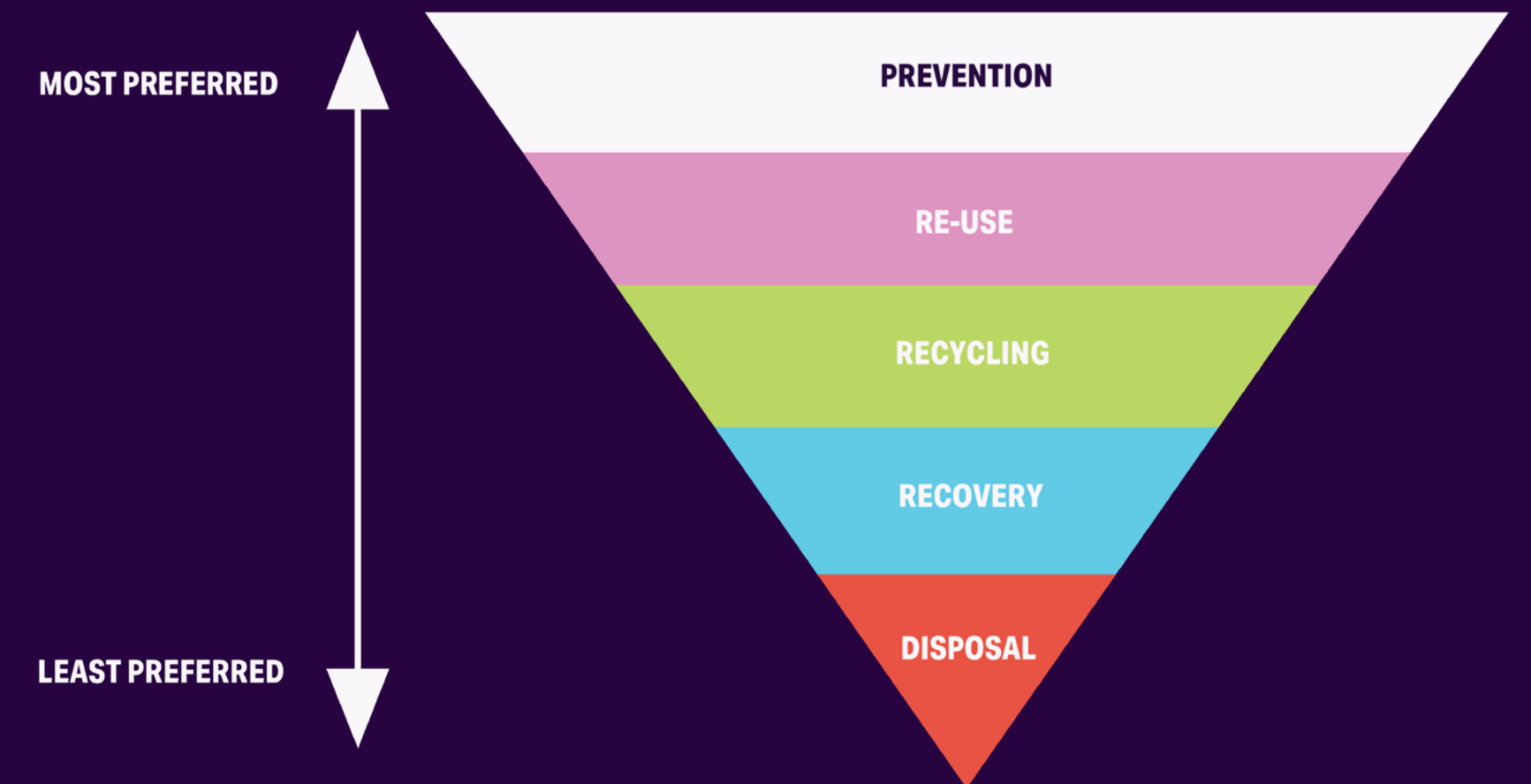
WASTE

Our waste management approach is centred around implementing proper practices that have far-reaching consequences. Through proper waste management, we can prevent harmful chemicals entering the environment to help safeguard ecosystems.

WE WILL LOOK FOR CONTINUOUS IMPROVEMENT IN WASTE MANAGEMENT BY:

- ✘ Applying the waste hierarchy to all our processes.
- ✘ Maintaining our zero to landfill status and achieving zero to incineration status.
- ✘ Increasing our percentage of recyclable waste to 100% by 2030.
- ✘ Creating an on-site waste centre to sort all our waste streams at source.
- ✘ Continuing to build on technologies like ORCA to reduce the carbon miles associated with waste transport.
- ✘ Extending our elimination of single-use plastics from front-of-house to back-of-house operations.

WASTE HIERARCHY



Successful waste management will also protect natural reserves and decrease greenhouse gas emissions by turning organic waste into usable products.

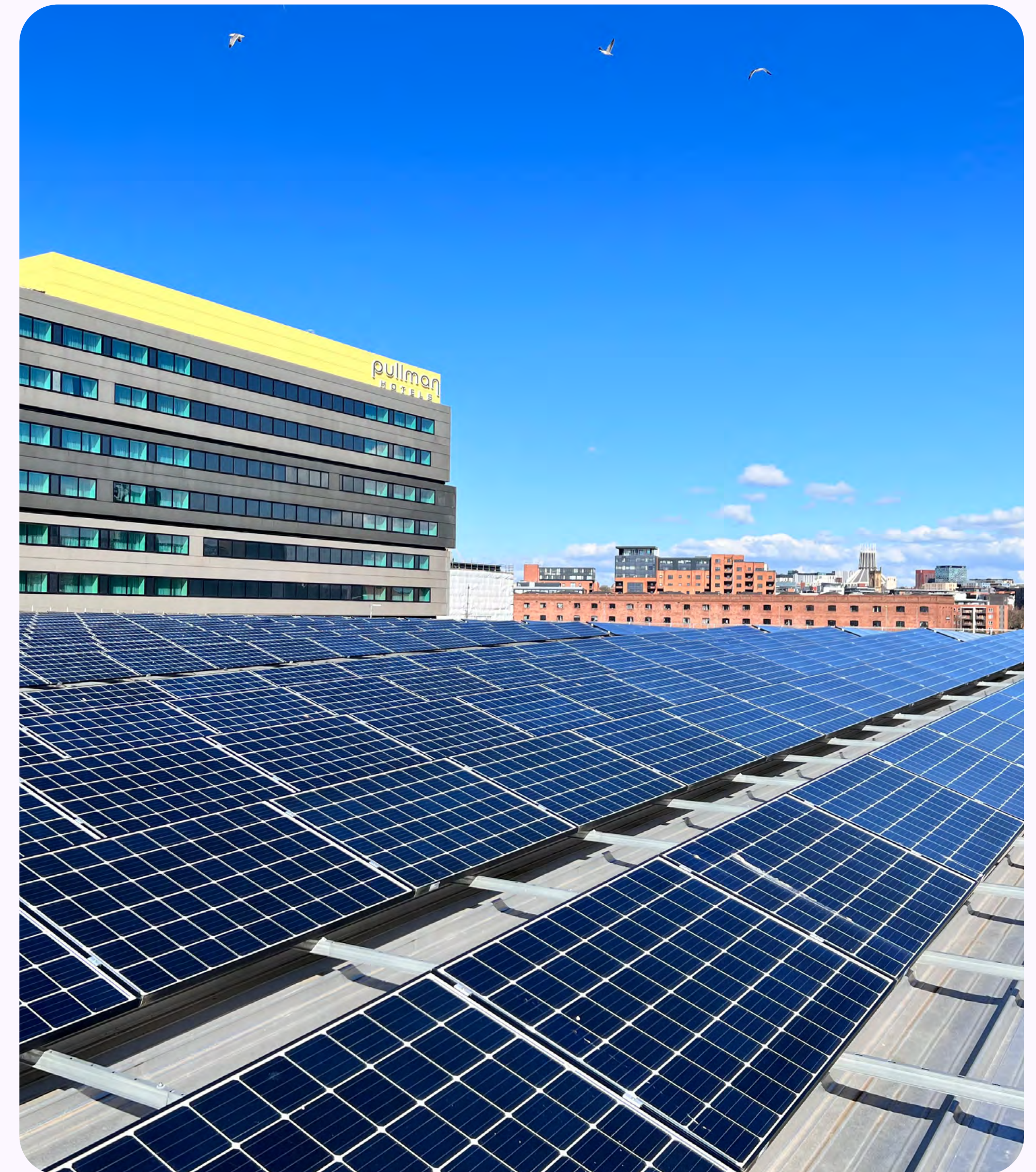
ENERGY

Decarbonising our energy supply is vital to contribute to the fight against climate change. We effectively plan, monitor, and optimise our energy consumption to reduce our carbon footprint and embed the concept of energy management as a long-term component of our business operations, underpinned by efficient technologies and sustainable practices

WE WILL ACHIEVE THIS BY:

- ✘ Moving to a more sustainable and renewable gas source in 2026.
- ✘ Continuous reduction of energy wastage across the campus.
- ✘ Working with Liverpool City Council to design and install a carbon zero heating solution for our campus in line with our 2030 net zero pledge.

- ✘ Removing the use of company vehicles as well as introducing a range of fully electric MEWPs and Forklifts across campus in 2026.
- ✘ Collaborating with our market leaders to explore innovative ways to accelerate our 2030 ambitions.
- ✘ Increasing renewable energy generation on campus and improving the control of building infrastructure and energy usage along with data gathering through our building management system.
- ✘ Continuing to upgrade and enhance existing facilities to improve sustainability and energy performance, ensuring targets in our 2030 roadmap are met.



PROCUREMENT

As a live event campus we have a large ecosystem of suppliers that we can call on to support our sustainability aims, sustainable procurement plays a pivotal role in the positive environmental, social, and economic impacts over the entire lifecycle.

OUR SUSTAINABLE PROCUREMENT APPROACH WILL INTEGRATE THESE FACTORS INTO RESPONSIBLE PROCUREMENT PROCESSES AND DECISION MAKING BY:

- ✘ Procuring environmentally friendly products or services.
- ✘ Reducing or avoiding consumption when possible.
- ✘ Buying locally when possible.
- ✘ Purchasing products or services that are manufactured, used, and disposed of in an environmentally friendly manner.
- ✘ Reviewing and rationalising our supplier ecosystem to reduce our carbon footprint
- ✘ Educating our staff to understand the environmental impact of procurement, including how it should be applied throughout our purchasing procedures and how the social value effect of our procurement is measured through the National TOMS framework.



FOOD & BEVERAGE

Choices made about food, equipment, logistics and materials used for catering of events influence environmental sustainability. By ensuring we opt for sustainable food choices, suppliers and by aligning sustainable catering with sustainable waste management, we can significantly reduce our carbon footprint and deliver meaningful health and environmental benefits.

WE WILL DO THIS BY:

- ✘ Bringing our arena catering in-house in 2026, giving us greater control over suppliers, processes and procurement, working towards adopting a hyper-local supply chain.
- ✘ Establishing a food-waste baseline across all operations and setting a year-end reduction target of 50%.
- ✘ Review and rationalise catering suppliers across both in-house and partner catering operations, establishing a single supplier ecosystem.
- ✘ Implement low-carbon menu options, including 100% removal of beef burgers and a minimum of 30% plant-forward dishes available at all times.



TRAVEL

We want all our clients and visitors to be equipped with the knowledge that enables them to make the most sustainable travel choice when visiting our campus. On average, travel contributes 60% to an event's carbon footprint, so by addressing this we can significantly reduce their environmental impact.

WE WILL DO THIS BY:

- ✘ Working with local and national travel providers to incentivise the use of public transport on our events.
- ✘ Working with event clients to promote more environmentally friendly modes of transport to and from their event, i.e., car sharing, trains, making use of the scooters throughout Liverpool when in tenancy.
- ✘ Proactively communicating with our transport partners and travel providers to discuss possibilities of free/reduced cost of public transport with a delegate badge.
- ✘ Trialling and looking to adopt an integrate public transport and ticketing programme for our consumer events.
- ✘ Establishing a robust carbon baseline for staff travel, cutting commuting-related emissions by 10% in 2026.



KEY *DELIVERABLES* FOR 2026



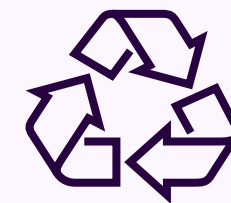
EVENTS

Organising an annual sustainability event for staff and stakeholders to drive meaningful behaviour change through education and knowledge-sharing.



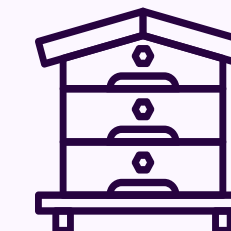
ENERGY

Expand and improve our on-site rainwater harvesting processes.



WASTE

Establishing a food-waste baseline across all operations and setting a year-end reduction target of 50%.



BIODIVERSITY

Working with city partners to develop and launch a 'Follow the Buzz' trail across the city region.



CATERING

Implement a low-carbon menu across campus, removing beef burgers by April 2026 and ensuring a minimum of 30% plant-forward dishes are available at all times.



PROCUREMENT

Reviewing and rationalising our supplier ecosystem to reduce our carbon footprint.



TRAVEL

Establishing a robust carbon baseline for staff travel, cutting commuting-related emissions by 10% in 2026.

ROAD MAP

COLOUR KEY

-  COMPLETE
-  KEY MILESTONE
-  IN PROGRESS

2023 - 2026
Reduce gas consumption by installing air sourced heat pumps and improving building efficiencies



2023 - 2026
Waste reduction and increase in recycling to 75%



2023 - 2026
Reduce food waste by 50%



2023 - 2026
Waste management plan and onsite waste centre



2023 - 2026
Electric fleet of MEWPS and FLTs



2023 - 2026
Removal of company cars



2026 - 2030
Install new sources of renewable energy on site



KEY MILESTONE
Reduce baseline emissions by 50%



2026 - 2030
Achieve ZERO waste by 100% recycling



2026 - 2030
Replace gas fired AHUs with heat pump solution



ACHIEVE NET ZERO

